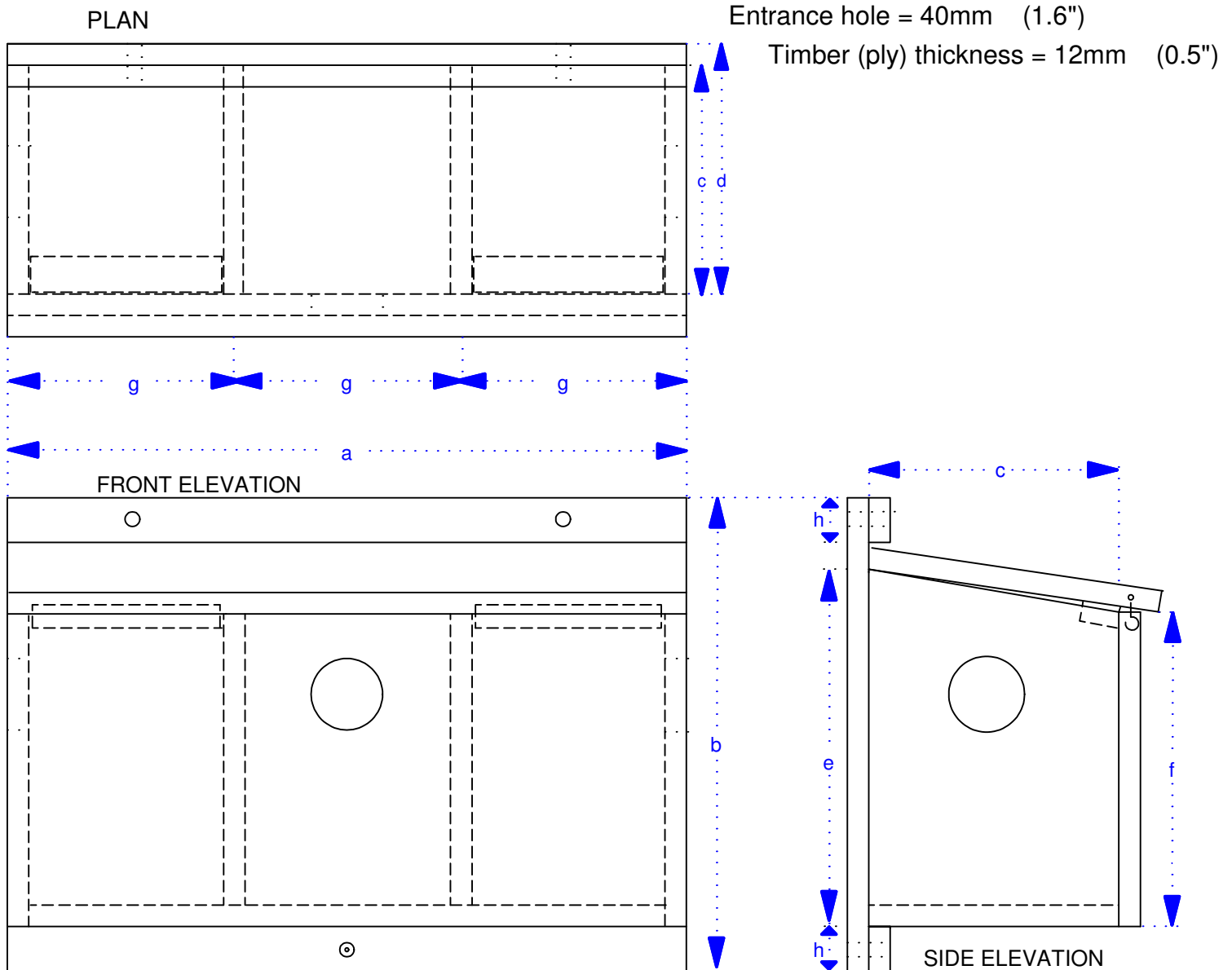


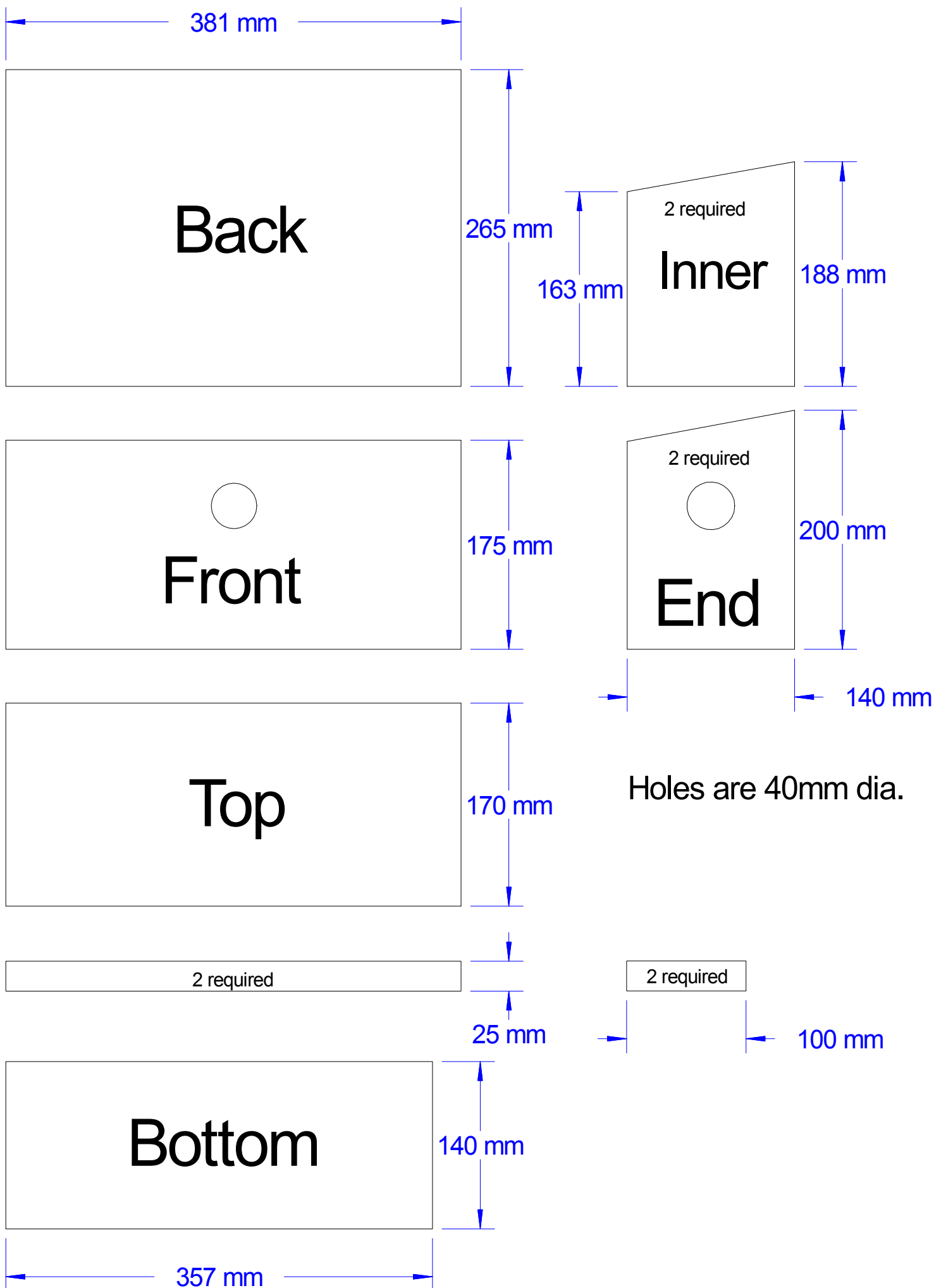
Flats for Sparrows

12mm (0.5 inch) timber or plywood will produce a strong but not too bulky box.

a = 381mm	(15")	e = 200mm	(8")
b = 265mm	(10")	f = 175mm	(7")
c = 140mm	(5.5")	g = 127mm	(5")
d = 152mm	(6")	h = 25mm	(1")



If ply is used it must be thoroughly sealed with a clear exterior quality varnish.



All wood is 12mm thick timber or exterior ply